

Medicare



SMART SLEEP SYSTEMS

# Pathway Programs™



There is great demand for the diagnosis and proper identification of patients that could potentially have sleep disordered breathing. Physicians and medical professionals need efficient means to be able to properly determine the possibility of sleep disordered breathing (SDB). Medcare's unique Pathway Programs offer precise, yet easy to use systems for detecting SDB with flexible components to fit every environment.

- Detect Sleep Disordered Breathing
- Detect snoring
- Detect breathing instability
- Differentiate between central and obstructive apnea
- Use the activity and position sensor to estimate rest time
- Record oximetry optionally
- Simple and easy to use
- Minimize need for training
- Download, analyze and report in under 3 minutes

**Medcare Compass™**

**Sleep Clinic**

---

**Patient Information**

Last Name: Doe	Gender: Male
First Name: John	Date of Birth: N/A
Patient ID: 123456789	Height: 1,78 m
Address: Address 123	Weight: 95,0 kg
City: 53233 Large Town, TR	BMI: 30,0
Phone: 5423438098	

---

<b>Recording Interval</b>	<b>Analyzed Interval</b>
Date: 29.3.2003	Start Time: 22:23:16
Start Time: 22:22:27	Stop Time: 06:02:22
Stop Time: 06:02:22	Duration: 459,1 minutes
Duration: 459,9 minutes	Est. Rest Time: 448,5 minutes

---

<b>Indices</b>	<b>Data Integrity</b>
AHI: 7,4 Medium	Number of upright periods or device disconnections were 0 and accounted for 0,0 minutes. Number of movement periods were 11 and accounted for 10,6 minutes that were excluded from analysis. Flow signal was valid for 100% of rest time. Oximetry signal was valid for 100% of rest time.
ODI: 17,1 High	
Apnea Index: 0,9	
Hypopnea Index: 6,4	
RMI: 21,7%	
PBI: 5,9%	
Average Pulse Rate: 80,7 bpm	

---

<b>Event Count</b>	<b>Terminology</b>
Apneas: 7	<b>AHI</b> - Apnea/Hypopnea Index, number of apneas and hypopneas per hour of rest.
Obstructive Apneas: 5	<b>ODI</b> - Oxygen Desaturation Index, number of desaturations per hour of rest.
Central/Mixed Apneas: 2	<b>RMI</b> - Respiratory Mechanics Instability, duration of RMI episodes as a percentage of rest time.
Hypopneas: 48	<b>PBI</b> - Paradoxical Breathing Index, percentage of rest time where breathing is out of phase.
Desaturations: 128	
RMI Periods: 169	
Paradoxical Periods: 48	
Breaths: 7247	

---

**Comments**  
Please note this patient's AHI.

Report Printed 19.3.2004 11:58:12

Example Report

## ■ Components

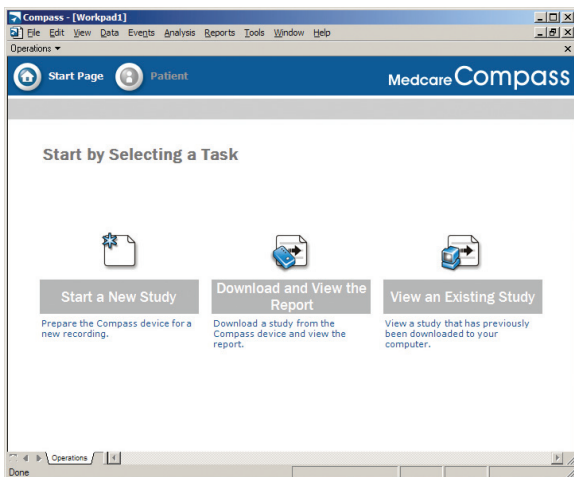
Medcare knows one solution does not fit all. Pathway Programs feature a variety of components and options to suit your needs for detecting, diagnosing and controlling therapy of sleep disordered breathing. Plus, these components have all been designed to be comprehensive but incredibly easy to use. This means less time spent on training and using the system. The components come with a detailed written manual and a helpful hook-up card for patients. The software also simplifies the process with an intuitive user interface featuring familiar tasks. This makes it easy for anyone to use the software.

## ■ The Compass Software

The Medcare Compass Software is used to prepare the Compass recorders, download and analyze the study. It introduces a new type of user interface, designed for a simple and efficient workflow. By building on Medcare's strong software technology, this software frees up your time and lets you focus more on the patient. You can download, analyze, and make a report in less than 3 minutes. Plus, our proven analysis algorithms can analyze the recordings provided by the Compass recorder.

## ■ The Compass Recorder

The Compass lightweight recorder uses a quick, USB download and provides the most ergonomic solution for you and your patient. There are two models available.



The Compass Start Screen

■ **Compass M10**

This recorder is ideal for detecting Sleep Disordered Breathing, differentiating between central and obstructive apnea and using RMI to indicate patient breathing instability. The M10 is also a perfect fit for therapy control studies as flow is detected through the XactTrace RIP belts.

This device is based on respiratory movement acquired with Medicare's XactTrace RIP belts. It records thoracic and abdominal movement, position, activity, RMI and XFlow. Medicare's patent-pending RMI parameter gives an indication of a patient's breathing stability while XFlow is a semi-quantitative measure of inspiratory and expiratory flow derived from XactTrace.

■ **Compass F10**

This recorder is ideal for detecting SDB, snoring and using the flattening index to indicate flow limitation in the upper airway.

This device is based on nasal flow acquired with Medicare's nasal cannula. It also records snoring, position, and activity.

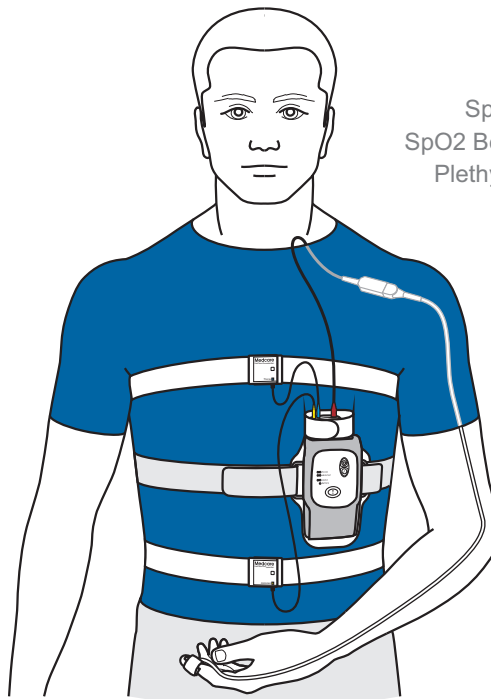


■ **Extensions**

- **Compass Oximeter Option:** Both devices offer the option of connecting an oximeter to complement the recording. The Compass oximeters also connect to ResMed ResLink technology.
- **Compass M10 Pediatric Option:** The Pediatric Option includes Medicare's disposable XactTrace belts to fit small individuals and children.
- **Compass M10 Custom-Fit Belt Option:** The Custom-Fit Belt Option includes Medicare's disposable XactTrace belts plus velcro straps to better suit patients of various sizes.

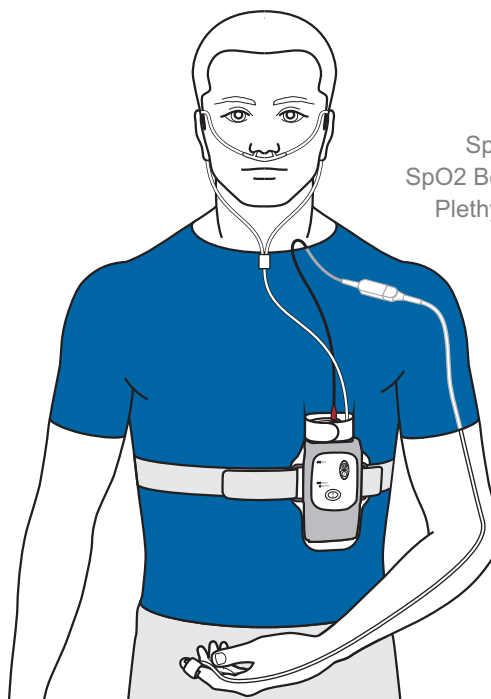
**Recorded Signals from Compass M10 & Optional Oximeter**

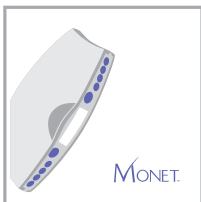
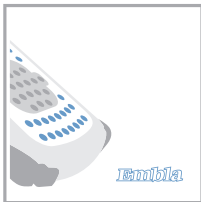
- Abdominal Movement
- Thoracic Movement
- XFlow
- Activity
- Position
- SpO2 Quality
- SpO2 Beat-to-Beat
- Plethysmograph
- RD Quality
- SpO2



**Recorded Signals from Compass F10 & Optional Oximeter**

- Nasal Pressure
- Nasal Flow
- Flattening
- Snore
- Activity
- Position
- SpO2 Quality
- SpO2 Beat-to-Beat
- Plethysmograph
- RD Quality
- SpO2





## SMART SLEEP SYSTEMS

- Detect Sleep Disordered Breathing
- Detect snoring
- Detect breathing instability
- Differentiate between central and obstructive apnea
- Use the activity and position sensor to estimate rest time
- Record oximetry optionally
- Simple and easy to use
- Minimize need for training
- Download, analyze and report in under 3 minutes

Compass systems are manufactured by Medcare Flaga, Reykjavik, Iceland. The manufacturer works in accordance with the EN ISO 9001 and EN ISO 13485 quality system and has the authority to mark the products with the CE mark. The CE mark is a declaration that the device is in compliance with the directives set forth by the European Union for medical devices, in particular the MDD annex VII. Compass is a Class IIa device according to Medical Device Directive (MDD), Annex V, "EC Directive" 93/42/EEC and Swedish implementation of the directive LVFS 2001:6. Certificate No. 41311838. Compass, XactTrace and Pathway Programs are trademarks of Medcare Flaga.

Medcare Flaga Sidumuli 24, 108 Reykjavik, Iceland Tel: +354 510 2000 Fax: +354 510 2010 • Medcare GmbH Argelsrieder Feld 11, 82234 Wessling, Germany Tel: +49 (0) 8153-90666-30 Fax: +49 (0) 8153-90666-31 • Medcare Flaga Kon. Wilhelminallein 13, 1062 HH Amsterdam, The Netherlands Tel: +31 20 346 0130 Fax: +31 20 346 0121 • Medcare Systems, Inc 55 Pineview - Suite 100, Buffalo, NY 14228 U.S.A. Tel: +1 (716) 691 0718 Fax: +1 (716) 691 1004

For further information, see [www.medcare.com](http://www.medcare.com) or contact [sales@medcare.com](mailto:sales@medcare.com)

D-0403-001